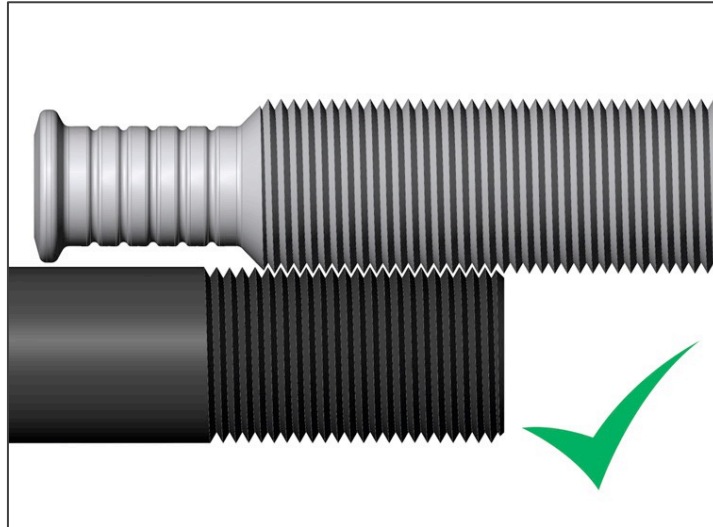
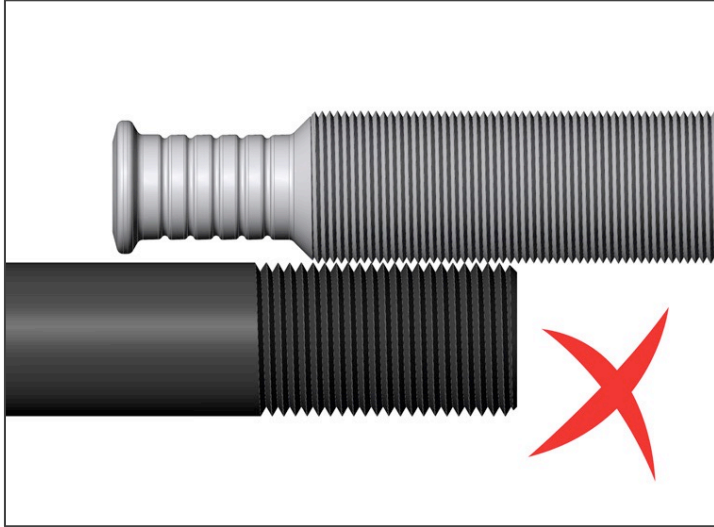


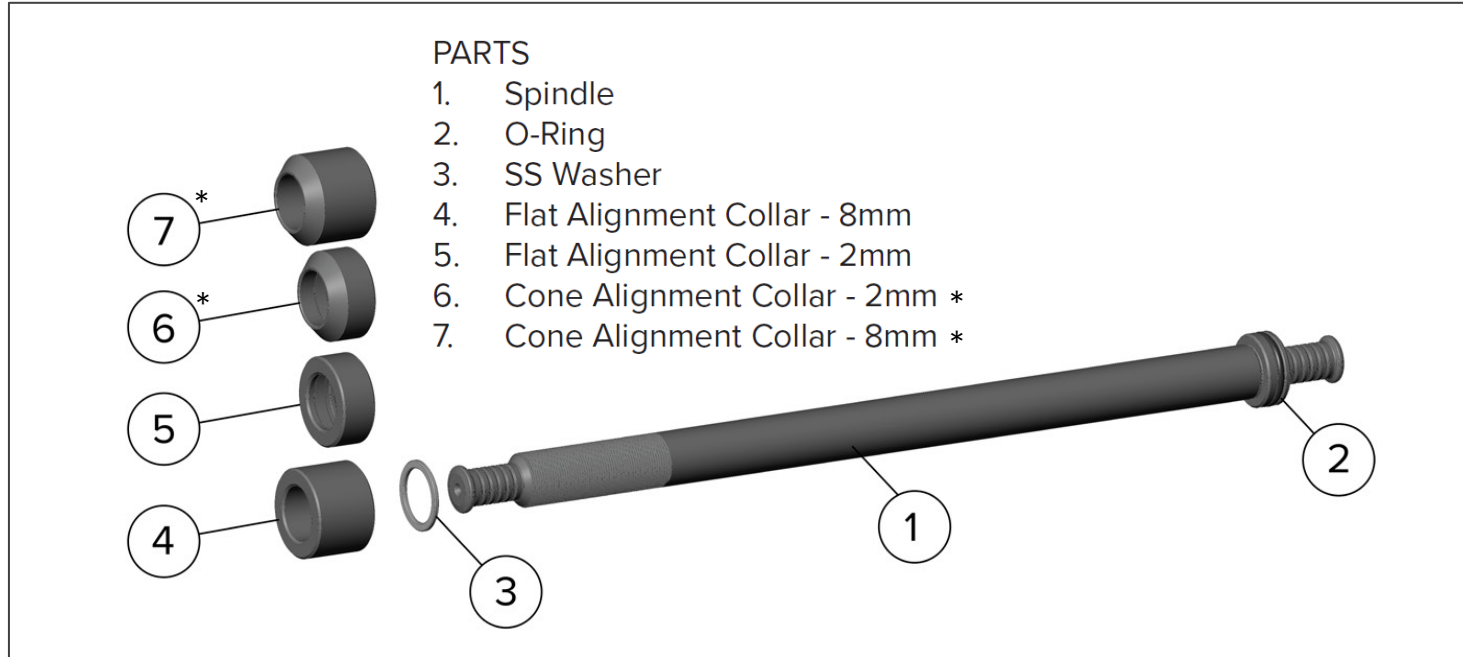
# Thru Axle Assembly Instructions

# STEP 1



Before starting, compare your old axle and the Tailfin Axle. The threads should match.

## STEP 2



Be sure to match the correct shape of Collar to your existing axle – try different collar lengths to help center the axle

\*Please note parts 6 and 7 are only required for the 1.0mm Thru axle option (Not supplied with other Axle pitches)

## STEP 3



Thru axle ready for assembly

## STEP 4



Add stainless steel washer



## STEP 5



Close up of stainless steel washer

## STEP 6



Slide on the correct head on until it 'clicks' on to the end

## STEP 7



Install using a 5mm hex key and tighten to 8-10Nm.

It is normal to have thread showing, Most importantly, it is just as safe as your original axle as the number of threads engaged with your frame are the same.